



USB Type A



Micro USB



USB - CDC



RS232

Classic Line Series

Intelligent Magnetic Stripe Readers

The Classic Line Series of Magnetic Stripe Readers is the foundation upon which all of our readers are created and others attempt to imitate. Utilizing advanced bit recovery techniques they provide the highest read rates in the industry.

Introduction

The Classic Line series of Magnetic Stripe readers, reads up to 3 tracks of information when the card is swiped in either direction. Its size is small enough to fit into most tight spaces yet not so small to impact card readability. With MultiMode USB interface, one USB reader handles multiple USB modes, no need to have a separate unit for RS232, Keyboard, and HID interfaces. The configurable options and versatile interfaces make the Classic Line Series of Magnetic Stripe readers ideal for POS, Banking, Loyalty, Access Control, Student ID and other applications.

● Reads credit cards and drivers licenses



Features

- Reads up to three tracks of data
- Available in dual head configuration (read head on both sides)
- Reads High and Low coercivity magnetic stripe cards
- Available in Black or White (Beige)
- Full formatting of Name, Account Number and Expiration Date for ABA cards
- 1,000,000 Card swipe long life read head
- Warranty period of **3** years, we stand behind our products
- Includes a Universal Mode Keyboard Country output
- PC software for ease of programming and configuration storage
- Compact 100mm size ensures easy and accurate card swiping
- Interfaces for USB-HID, USB-KBD, USB-Serial, USB-CDC and RS232-9F
- Read encoded cards that meet ISO/ANSI/AAMVA and CADMV standards and formats
- Perfect for POS, Banking, Loyalty, Gift Card, Access Control and other applications
- Multi-Color LED & Loud buzzer provide visual and auditory feedback

● Reads all AAMVA and CADMV format cards



Made in USA

Compatibility and Versatility

- Compatible with Windows 10/8/7/Vista/XP Home/XP Professional/2000/Me/98se, Apple OS 8.x+, Linux
- Compatible with Popular Accounting Software: QuickBooks, PeachTree, Cougar Mountain Software, Microsoft Point of Sale, Microsoft Dynamics and more
- OPOS/UnifiedPOS Drivers for those applications that require it, complete with VBScript, JavaScript & Visual Basic sample programs
- JavaPOS/UnifiedPOS Driver for integration into your Java application
- Control Library Available for tighter application integration
- Enhanced Mode USB Drivers: Keyboard Accelerator, Virtual-RS232 Driver, HID Technical reference
- Multiple Cabling Options: USB-Type A, USB-Micro, 9Pin D-Sub
- Custom firmware, Cable Lengths, Cable Exits available to fit your needs
- Private label versions available with custom part numbers (Protects your relationship with your customers)

ID Innovations
Incorporated

1244 Karla Drive, Suite 104
Hurst, TX 76053
Tel (817) 285-8772
Fax (817) 285-8839
www.IDInnovations.com

www.IDInnovations.com

1244 Karla Drive, Suite 104 Hurst, TX 76053 Tel (817) 285-8772 Fax (817) 285-8839

Copyright © 2018 ID Innovations Incorporated 121418

Classic Line Series

Specifications

Electrical

Power: 5 VDC \pm 10%, Separate ground for power and Magnetic Read Head, ensures reliability in high static environments
 Operating Current: 20 mA-Standby, 40 mA-Operating
 Reliability: Brown Out, Low Voltage and Watch Dog Resets ensure continuous operation in less than ideal environments

Magnetic Stripe

Maximum Tracks: 3
 Number of Heads: 1 (Standard)
 Magnetic Head Life: 1,000,000 passes minimum
 Rail and Cover Life: 1,000,000 passes minimum
 Swipe Speed: 2 to 100 Inches/s (5 to 254 cm/s), bi-directional
 Conformance: ISO 7811, AAMVA and CADMV, others available upon request
 Card Slot Width: .065 (1.65 mm) inches, accommodates card thickness ranging from .015 to .060 inches (.38 mm to 1.52 mm)
 Warranty: Three years parts and labor (longer than industry standard warranty)

Mechanical

Indicators: Tri-colored LED, Extra loud buzzer (for noisier environments)
 Dimensions: 1.67" (42.4 mm) W x 1.08" (27.4 mm) H x 3.98" (101.17 mm) L
 Weight: 4.4 oz (with cable)
 Cable Length: 6' USB Cable (custom cable lengths and bottom cable exit options available, no minimum quantities required)
 Connectors: USB (1', 2', & 6')
 Mounting Options: Use provided Velcro pads, or can be mounted with 4-40 screws available upon request

Environmental

Operating Temperature: 0° to 70° C (32° to 158° F)
 Storage Temperature: -30° to 80° C (-22° to 176° F)
 Relative Humidity: 10-90% Non Condensing
 ESD Immunity: Withstands 8 KV contact & 15 KV air discharge without damage or operational impact

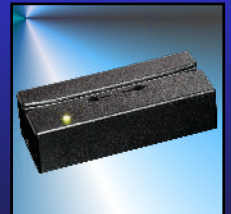
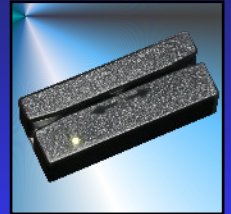
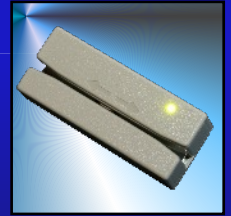
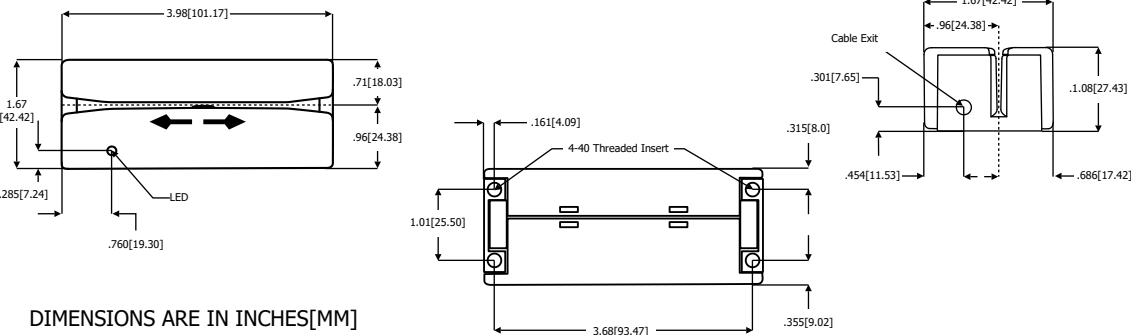
Regulatory

FCC: FCC Class B tested and verified (X-Series based reader)
 CE: CE Certified (X-Series based reader)
 Other: RoHS Compliant (X-Series based reader)
 California Proposition 65 Compliant



Free Drivers & Software (downloadable, not required, Windows only)

Programming Software: Programming software for the Classic Line MultiMode USB readers
 Accelerated Keyboard Driver: Allows for additional data formatting unmatched by any other Magnetic Stripe Reader
 Virtual COM Port Driver: Allows for additional data formatting unmatched by any other Magnetic Stripe Reader
 OPOS Drivers: Available in several levels of Conformance
 Java POS Driver: Available for USB Models



ID Innovations
 Incorporated
 1244 Karla Drive, Suite 104
 Hurst, TX 76053
 Tel (817) 285-8772
 Fax (817) 285-8839
 www.IDInnovations.com

www.IDInnovations.com

1244 Karla Drive, Suite 104 Hurst, TX 76053 Tel (817) 285-8772 Fax (817) 285-8839

Copyright © 2018 ID Innovations Incorporated 121418

Classic Line Series

Accessories & Part Numbers

Universal Programmer [univpgm.exe/usbpgmw.exe] (Download free from www.IDInnovations.com)

This software is used to configure the MultiMode USB Magnetic Card Readers. Simply set the options in the software that you want to use and then Send the Configuration to the Magnetic Card Reader.

USB Keyboard Accelerator [usbkbd.exe] (Download free from www.IDInnovations.com)

Unlock the full speed potential of your ID Innovations MultiMode USB product by using this driver. In addition to a speed increase of 300 to 500 % this driver will block all other incoming keyboard keystrokes thus ensuring your data is transmitted without interruption. The most exciting feature of the Keyboard Accelerator is the ability to format and validate the data in any order that your application requires.

USB Virtual COM Driver [usbvcom.exe] (Download free from www.IDInnovations.com)

Do you have an application that will only accept data from a serial RS232 port? With this driver and any ID Innovations USB product we can create a Virtual COM port that your application can use to receive the serial data. In addition, data throughput will increase 300% over standard keyboard output. The latest feature of the Virtual COM port is the ability to format and validate the data in any order that your application requires. No other hardware is required!

OLE POS (UnifiedPOS) Drivers [SetupOPOS1_XXXX.exe] (Download free from www.IDInnovations.com)

Do you require a Magnetic Card Reader that has OPOS or UnifiedPOS capability? All ID Innovations Card readers have this ability and these drivers are available for use in your OLE OPOS compliant application. There are three distinct versions of the driver available that match the OPOS & UnifiedPOS specifications with the same version number (SetupOPOS13.exe – 1.03, SetupOPOS16.exe – 1.06, and SetupOPOS1_11XXXX.exe – 1.13 (UnifiedPOS))

Java POS (UnifiedPOS) Service Object [JavaPOSMSRv1_XXSetup.exe] (Download free from www.IDInnovations.com)

Do you require a Magnetic Card Reader that has JavaPOS capability? All ID Innovations Card readers have this ability and this driver is available for use in your Java application that supports the Java POS framework. Simply download and install the software package on your computer and follow the enclosed directions.

ID Innovations
I N C O R P O R A T E D

1244 Karla Drive, Suite 104
Hurst, TX 76053
Tel (817) 285-8772
Fax (817) 285-8839
www.IDInnovations.com

MultiMode USB Magnetic Stripe Readers (Part Numbers)

Cable	Color	Dual Track (Single Head)	Dual Track (Dual Head)	Triple Track (Single Head)	Triple Track (Dual Head)
1' USB Type A Male	Black	MU-B2-1	MU-B2-1D	MU-B3-1	MU-B3-1D
2' USB Type A Male	Black	MU-B2-2	MU-B2-2D	MU-B3-2	MU-B3-2D
6' USB Type A Male	Black	MU-B2-6	MU-B2-6D	MU-B3-6	MU-B3-6D
6' Right Angle USB Type A*	Black	MU-B2-6R	MU-B2-6RD	MU-B3-6R	MU-B3-6RD
6' Left Angle USB Type A*	Black	MU-B2-6L	MU-B2-6LD	MU-B3-6L	MU-B3-6LD
1' USB Type A Male	White	MU-W2-1	MU-W2-1D	MU-W3-1	MU-W3-1D
2' USB Type A Male	White	MU-W2-2	MU-W2-2D	MU-W3-2	MU-W3-2D
6' USB Type A Male	White	MU-W2-6	MU-W2-6D	MU-W3-6	MU-W3-6D
6' Right Angle USB Type A*	White	MU-W2-6R	MU-W2-6RD	MU-W3-6R	MU-W3-6RD
6' Left Angle USB Type A*	White	MU-W2-6L	MU-W2-6LD	MU-W3-6L	MU-W3-6LD

*Please contact us for availability

www.IDInnovations.com

1244 Karla Drive, Suite 104 Hurst, TX 76053 Tel (817) 285-8772 Fax (817) 285-8839

Copyright © 2018 ID Innovations Incorporated 121418